

# Rail fastening system for slab tracks

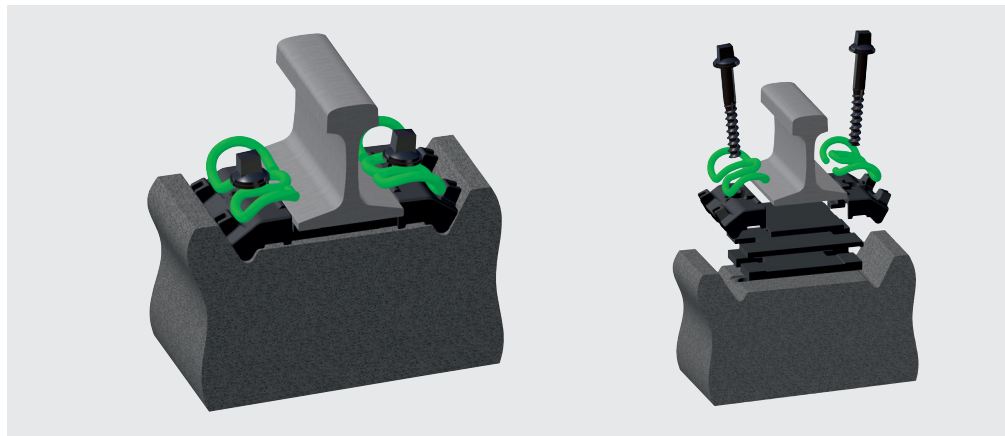
System 300 UTS

# Slab track system 300 UTS with tension clamp Skl 21

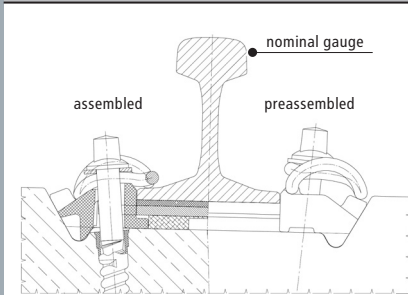
Highly elastic rail fastening system for urban transport  
for use on slab tracks.

## FEATURES

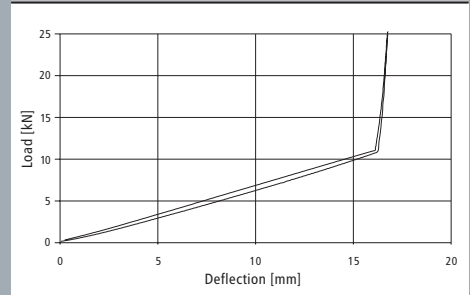
- Skl 21 tension clamp with 2.5 mm fatigue strength
- All components can be preassembled at the sleeper plant
- Stable gauge and height adjustment
- Improved ride comfort
- Rail tilting protection by middle bend of the tension clamp
- High vertical deflection of rail through an elastic intermediate pad with a large surface and stiffnesses  $\geq 17$  kN/mm
- The highly elastic pad is protected against overstrain by the tilt protection of the angled guide plate



System 300 UTS



Load/spring deflection of tension clamp Skl 21



Vossloh Fastening Systems GmbH  
P.O.Box 18 60  
D-58778 Werdohl  
Phone +49 (0) 23 92/52-0  
Fax +49 (0) 23 92/52-375  
info@vfs.vossloh.com