

# Rail fastening system for slab tracks

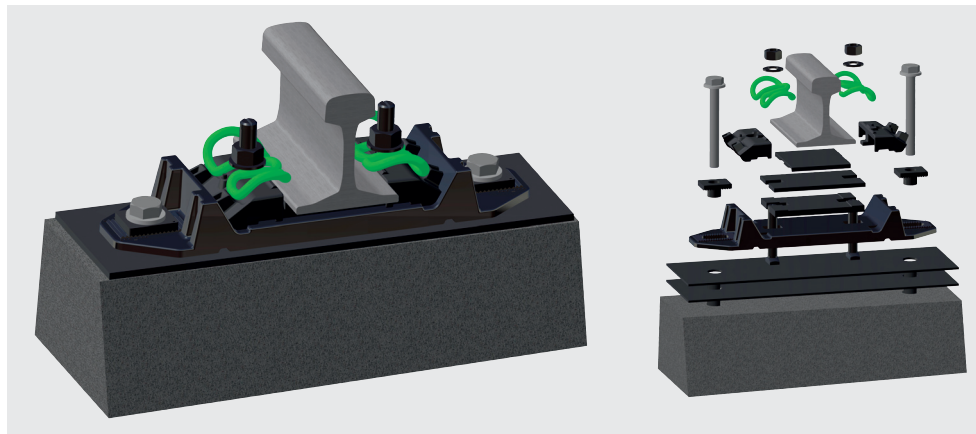
System DFF 300 UTS

# System DFF 300 UTS with tension clamp Skl 21

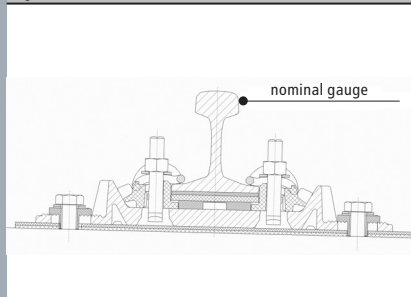
Elastic rail fastening system, a member of the system 300 family but modified for local and light rail traffic axle loads of up to 18 t.

## FEATURES

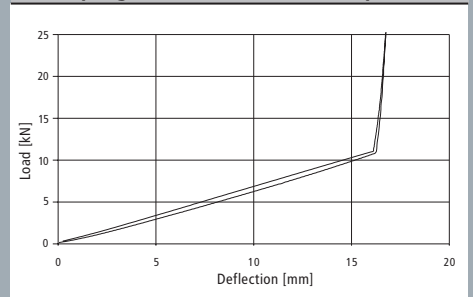
- Skl 21 tension clamp with 2.5 mm fatigue strength
- All components can be preassembled
- Stable track gauge
- Stable height adjustment
- Single rail support. Compatible with slab tracks and concrete sleepers without shoulders
- Rail tilting protection by middle bend of the tension clamp and special design of the angled guide plate
- The highly elastic pad is safeguarded against overstrain by the tilting protection of the angled guide plates
- Special anti tilting design of elastic pad



System DFF 300 UTS



Load/ spring deflection of tension clamp Skl 21



Vossloh Fastening Systems GmbH  
P.O.Box 18 60 · D-58778 Werdohl  
Phone +49 (0) 23 92/52-0  
Fax +49 (0) 23 92/52-375  
info@vfs.vossloh.com