



Rail fastening systems for slab tracks

System DFF 300

System DFF 300 with tension clamp Skl 15

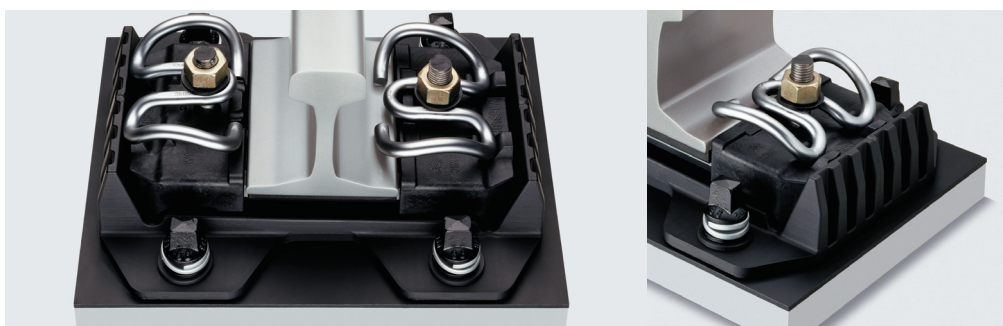
Single support as a highly-elastic rail seat for slab tracks.
Repair system for slab tracks.

Slab tracks meet all the requirements for combined high-speed and heavy load traffic.

A highly elastic intermediate plate substitutes for the elasticity of the ballast bed. A steel load distribution plate with rail pads on top is used to improve the load distribution on the intermediate plate.

Plastic angled guide plates, which form a precise gauge true channel, are embedded in a steel base plate. The rail is permanently tensioned by spring-actuation as a result of the long elastic spring deflection of the tension clamp Skl 15. The base plate itself is secured to the concrete slab of the track construction with 4 sleeper screws and plastic dowels or alternatively with anchor bolts.

The DFF 300 rail fastening system can be adjusted by at least 60 mm in height and by 46 mm in the track gauge. It is designed to fit as well directly onto the concrete slab as acting as single support both by interposition of a plastic intermediate plate.

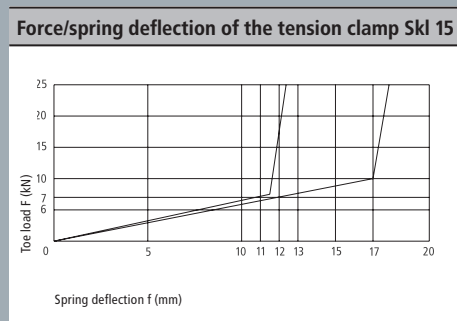
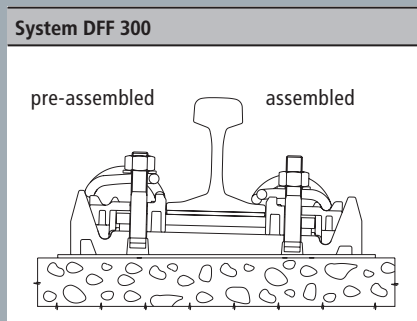


pre-assembled

assembled

In the case of repair or rehabilitation, the DFF 300 system can be placed between two failed or damaged rail seats points and used as a replacement fastening support.

The tension clamp Skl B 15 is available for bridge structures and other requirements with a reduced creep resistance.



Vossloh Fastening Systems GmbH
P.O.Box 18 60 · D-58778 Werdohl
Phone +49 (0) 23 92/52-0
Fax +49 (0) 23 92/52-375
info@vfs.vossloh.com

www.vossloh-fastening-systems.de