



Rail fastening system for slab tracks

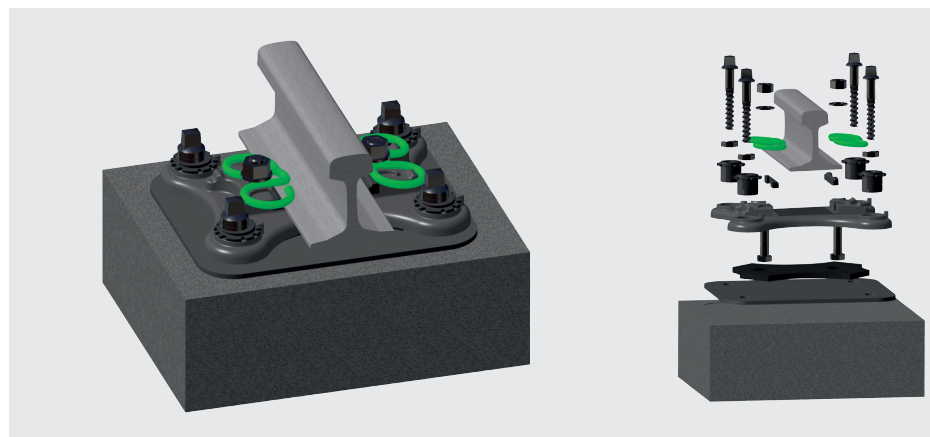
System DFF Metro

System DFF Metro with tension clamp Skl 25

Highly elastic rail fastening system
for use on slab tracks.

FEATURES

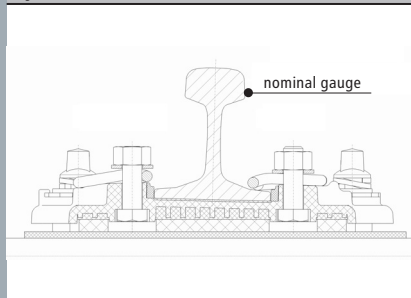
- Skl 25 tension clamp with 2.0 mm fatigue strength
- High elasticity of down to 8 kN/mm allows ample rail subsidence
- High electric resistance through plastic pads
- Low deflection of base plate through two-component-base plate
- Double gauge control ± 20 mm with adjusters and bushings
- Compatible with various rail profiles
- Screw/dowel and anchor bolt combination is possible
- Rail tilting protection by middle bend of the tension clamp
- Added tilting protection through special geometry of base plate



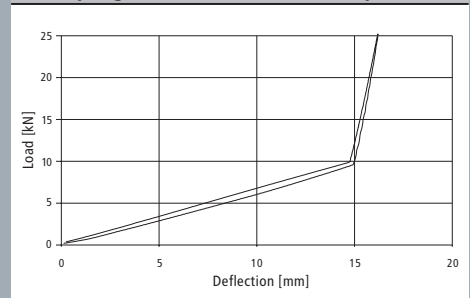
assembled

preassembled

System DFF Metro



Load/spring deflection of tension clamp Skl 25



Vossloh Fastening Systems GmbH
P.O. Box 18 60
D-58778 Werdohl
Phone +49 (0) 23 92/52-0
Fax +49 (0) 23 92/52-375
info@vfs.vossloh.com