

Rail fastening system for concrete sleepers

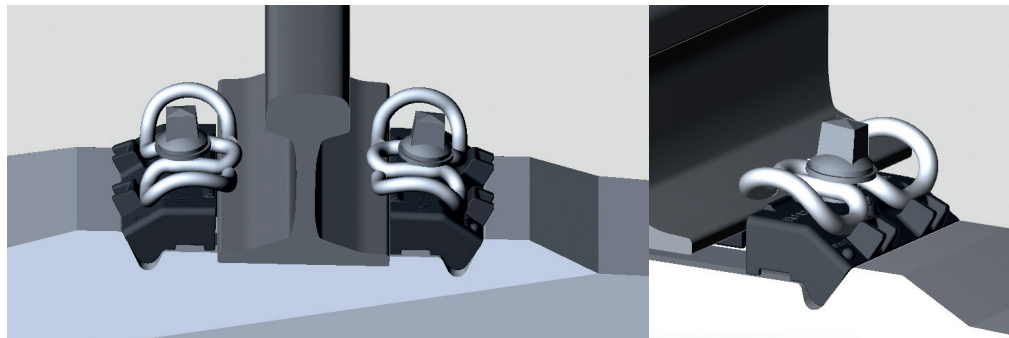
System E 21

Slab track system E 21 with tension clamp Skl 21

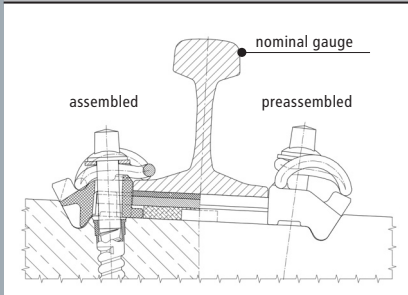
Highly elastic rail fastening system for enhanced elasticity on existing concrete sleepers for mainline tracks.

FEATURES

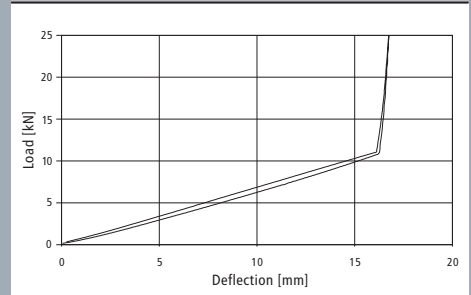
- Skl 21 tension clamp with 2.5 mm fatigue strength
- Existing concrete sleeper can still be used after converting from W to E 21
- Fully compatible with W-track sleepers
- Reduction of forces discharged onto concrete sleeper and ballast
- High vertical deflection of rail through an elastic intermediate pad with a large surface and stiffnesses ≥ 27 kN/mm
- Improved ride comfort
- Rail tilting protection by middle bend of the tension clamp
- The highly elastic pad is protected against overstrain by the tilt protection of the angled guide plate



System E 21



Kraft-Federweg-Diagramm, Spannklemme Skl 21



Vossloh Fastening Systems GmbH
P.O. Box 18 60
D-58778 Werdohl
Phone +49 (0) 23 92/52-0
Fax +49 (0) 23 92/52-375
info@vfs.vossloh.com