

Rail fastening system for ribbed plates

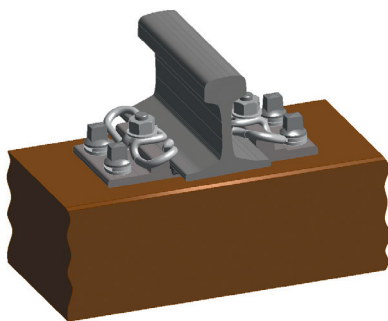
System KS 24

System KS 24 with tension clamp Skl 24

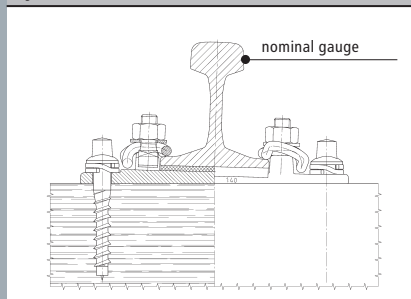
Rib plate fastening on steel, concrete, wooden or plastic sleepers in combination with highly elastic rail pads.

FEATURES

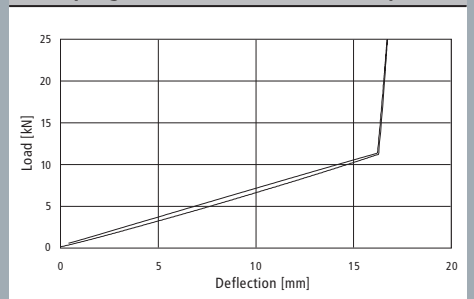
- Skl 24 tension clamp with 2.5 mm fatigue strength
- Defined tension force of the Skl 24 by mounting the middle bend on the rib
- Use of highly elastic rail pads with $> 50 \text{ kN/mm}$ stiffness also allow deep vertical rail deflection
- Improved bedding modulus
- Rail tilting protection by middle bend of the tension clamp
- Flat tension plate geometry also allows use in rail joint area



System KS 24



Load/spring deflection of the tension clamp Skl 24



Vossloh Fastening Systems GmbH
P.O.Box 18 60
D-58778 Werdohl
Phone +49 (0) 23 92/52-0
Fax +49 (0) 23 92/52-375
info@vfs.vossloh.com

08.10 GB

www.vossloh-fastening-systems.de