

Rail fastening system for concrete sleepers

System SB-4

System SB-4 with spring clamp SB-4

Elastic, screw-less and maintenance free rail fastening system for concrete sleepers on ballasted tracks.

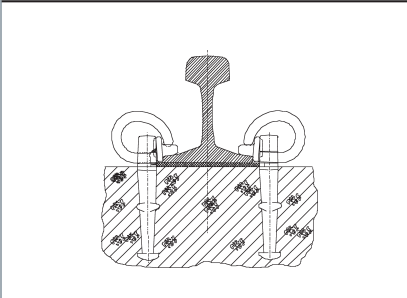
FEATURES

- The toe load of the SB-4 spring clamp is min. 2 x 8 kN
- The elastic PKV rail pad insulates the system and reduces the load on the sleeper and ballast
- The system is electrically insulated by the WKW isolators which ensure a consistent gauge width
- Simple and quick installation
- Reduction of noise level

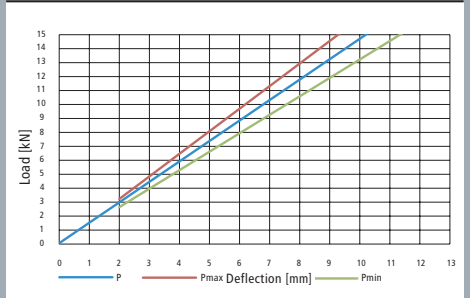


Vossloh Fastening Systems GmbH
P.O.Box 18 60
D-58778 Werdohl
Phone +49 (0) 23 92/52-0
Fax +49 (0) 23 92/52-375
info@vfs.vossloh.com

System SB-4



Load/spring deflection of the spring clamp SB-4



www.vossloh-fastening-systems.de