

Rail fastening system for concrete sleepers

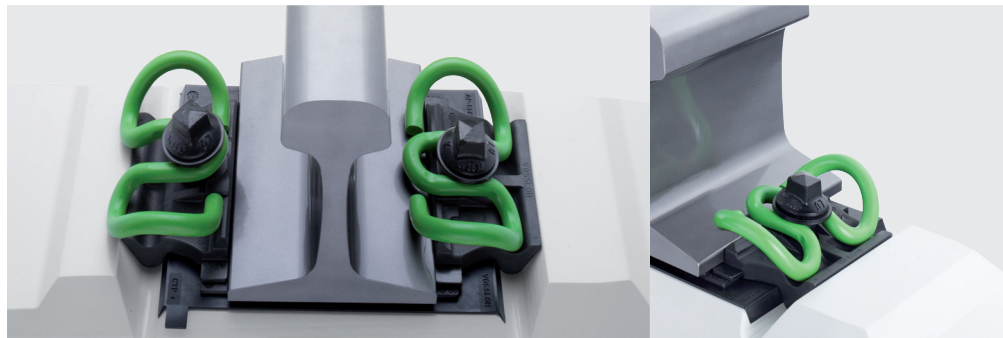
System W 14 HH

System W 14 HH with tension clamp Skl 14 R

Rail fastening system on concrete sleepers for ballasted track for heavy haul.

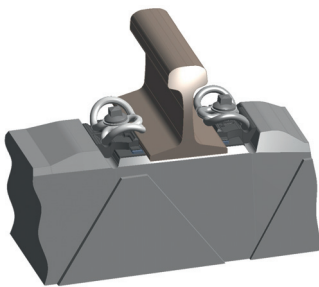
FEATURES

- Skl 14 R tension clamp with 1.8 mm fatigue strength
- Rail tilting protection by middle bend of the tension clamp and special design of the angled guide plate
- Pre-assembly of all components in the sleeper factory possible
- Reduction of maintenance costs by permanent elastic tensioning of the rail with tension clamps (2 x 12 kN toe load)
- Gauge adjustment ± 10 mm in 2.5 mm steps

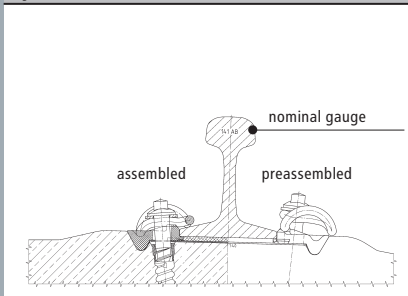


preassembled

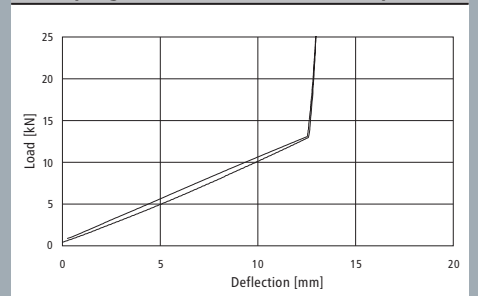
assembled



System W 14 HH



Load/spring deflection of the tension clamp Skl 14 R



Vossloh Fastening Systems GmbH
P.O.Box 18 60
D-58778 Werdohl
Phone +49 (0) 23 92/52-0
Fax +49 (0) 23 92/52-375
info@vfs.vossloh.com