

Rail fastening system

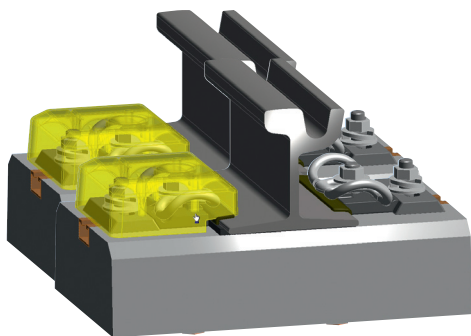
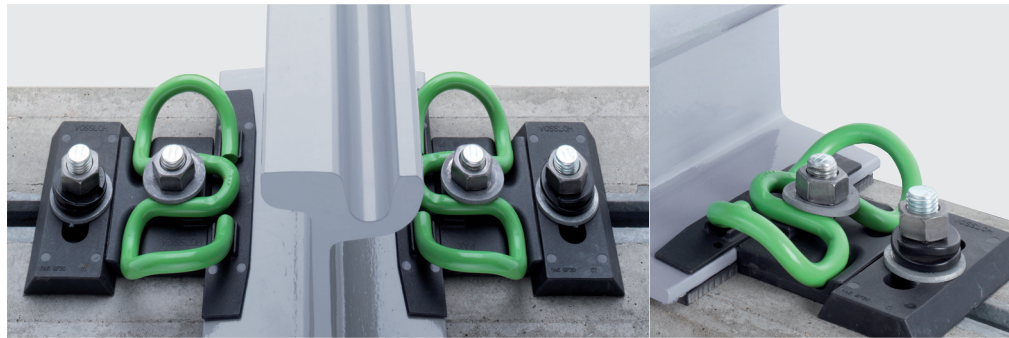
System W 21 SH

System W 21 SH with tension clamp Skl 21

Stepless adjustable and suitable for pre-assembled W rail fastening system – on sleepers with Halfen anchoring systems e.g. for turnouts.

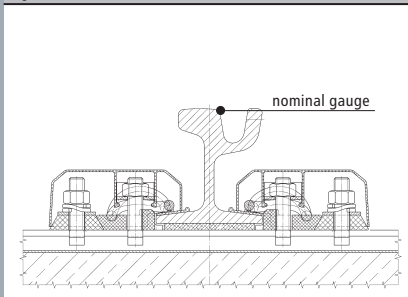
FEATURES

- Skl 21 tension clamp with 2.5 mm fatigue strength
- Rail tilting protection by middle bend of the tension clamp and by special design of angled guide plate
- Use of elastic rail pads
- Stepless gauge adjustment
- Use with different rail profiles without exchange of components
- All components are exchangeable
- Use in embedded track



Vossloh Fastening Systems GmbH
P.O.Box 18 60
D-58778 Werdohl
Phone +49 (0) 23 92/52-0
Fax +49 (0) 23 92/52-375
info@vfs.vossloh.com

System W 21 SH



Load/spring deflection of the tension clamp Skl 21

