

Rail fastening system for concrete sleepers

System W 21 T

System W 21 T with tension clamp Skl 21

Highly elastic rail fastening system for turnouts with concrete sleepers for ballasted track.

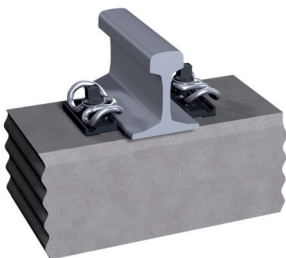
FEATURES

- Skl 21 tension clamp with 2.5 mm fatigue strength
- Use of highly elastic rail pads with > 30 kN/mm stiffness allows high vertical rail deflection
- Gauge adjustment ± 10 mm by changing of the angled guide plates
- Special design of the angled guide plate protects the rail pad from being over stressed.
- Pre-assembly of all components in turnout factory resp. sleeper factory
- Rail tilting protection by middle bend of the tension clamp and special design of the angled guide plates
- Special trapezoidal geometry of the angled guide plate to transmit high lateral forces on concrete sleepers without shoulders.



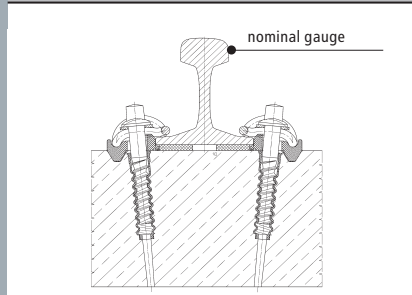
preassembled

assembled



Vossloh Fastening Systems GmbH
P.O.Box 18 60
D-58778 Werdohl
Phone: +49 (0) 23 92/52-0
Fax: +49 (0) 23 92/52-375
info@vfs.vossloh.com

System W 21 T



Load/spring deflection of the tension clamp Skl 21

