

Rail fastening system for concrete sleepers

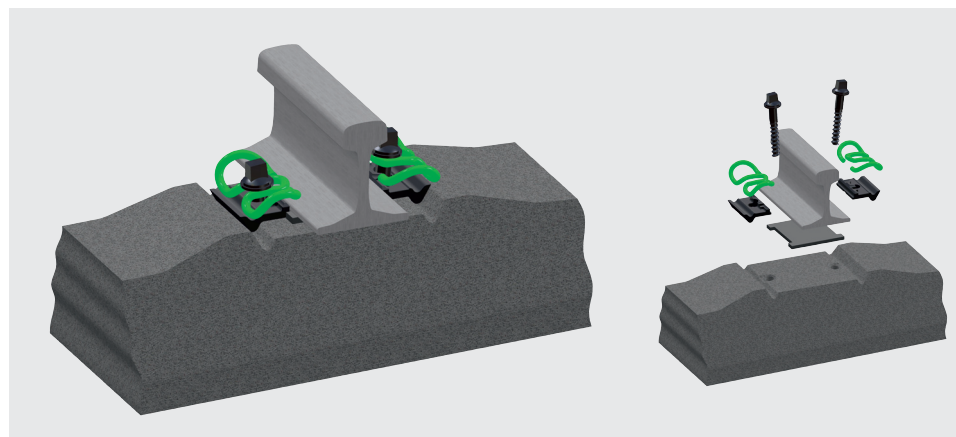
System W 21

System W 21 with tension clamp Skl 21

Highly elastic rail fastening system for concrete sleepers on main lines.

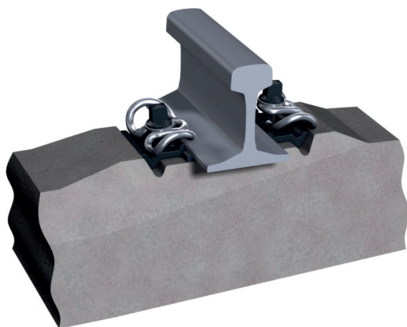
FEATURES

- Skl 21 tension clamp with 2.5 mm fatigue strength
- Highly elastic intermediate pads with stiffnesses $> 50 \text{ kN/mm}$ allow high vertical deflection of rail
- Rail tilting protection by middle bend of the tension clamp and specially designed angled guide plate
- The highly elastic pad is protected against overstrain by the tilt protection of the angled guide plate

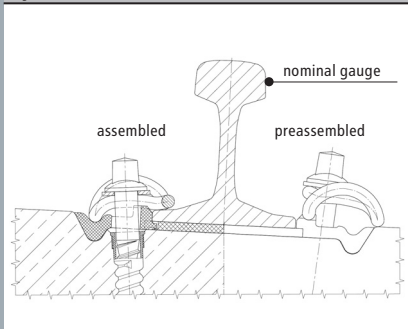


assembled

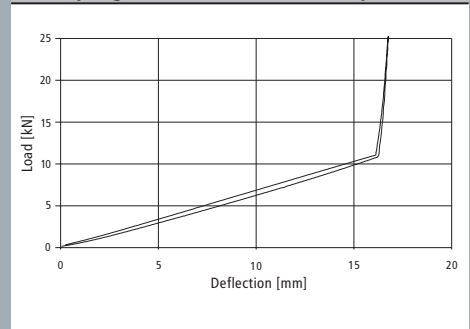
preassembled



System W 21



Load/spring deflection of tension clamp Skl 21



Vossloh Fastening Systems GmbH
P.O. Box 18 60
D-58778 Werdohl
Phone +49 (0) 23 92/52-0
Fax +49 (0) 23 92/52-375
info@vfs.vossloh.com