

Rail fastening system for slab track

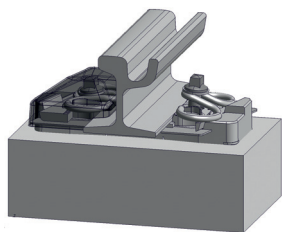
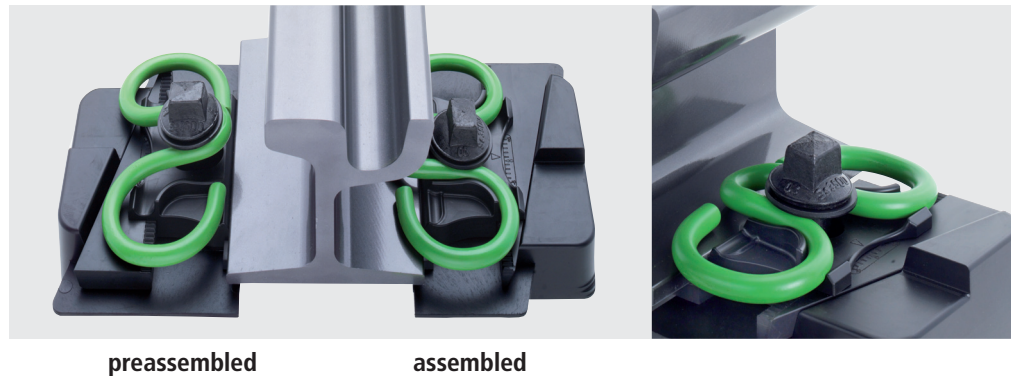
System W 25 Tram

Slab track System W 25 Tram with tension clamp Skl 25

Flat designed direct fastening for grooved- and vignole rails.

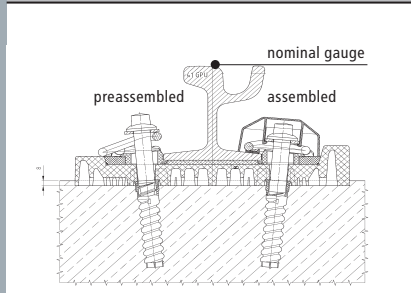
FEATURES

- Skl 25 tension clamp with 2.0 mm fatigue strength
- Gauge adjustable ± 10 mm by wedged angled guide plates – without changing the components
- Height adjustment
- good electrical insulation
- Use in turnouts
- Use in embedded track
- Rail tilting protection by middle bend of the tension clamp and special design of the angled guide plate
- Protection of the fastening system through matching of base plate and cover cap

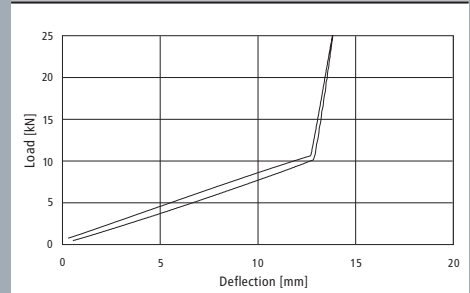


Vossloh Fastening Systems GmbH
P.O.Box 18 60
D-58778 Werdohl
Phone +49 (0) 23 92/52-0
Fax +49 (0) 23 92/52-375
info@vfs.vossloh.com

System W 25 Tram



Load/spring deflection of the tension clamp Skl 25



www.vossloh-fastening-systems.de