

Rail fastening system on concrete sleepers for heavy-haul traffic

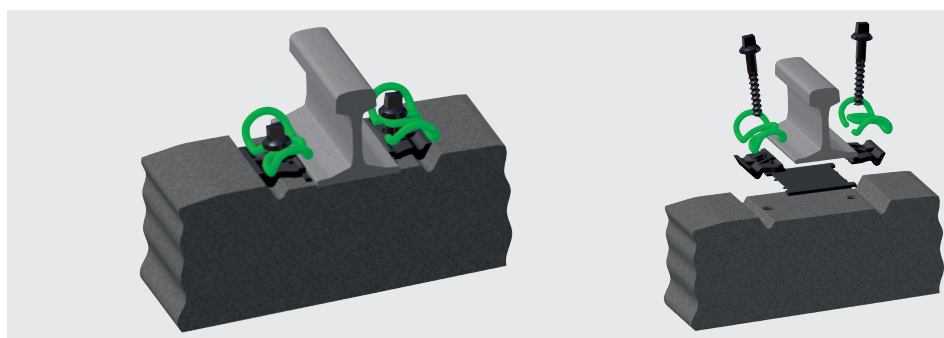
System W 30 HH / W 30 HH AP

System W 30 HH / W 30 HH AP with tension clamp Skl 30

Highly elastic heavy-haul rail fastening system
for ballast tracks and concrete sleepers.

FEATURES

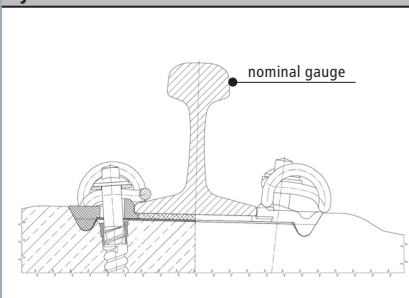
- Skl 30 tension clamp with high toe load combined with high fatigue strength of 2.2 mm
- All components can be pre-assembled at the switch or sleeper plant
- Rail tilting protection by middle bend of the tension clamp and specially designed angled guide plate
- Electrically insulated
- Gauge adjustment ± 10 mm by replacing angled guide plates
- High curvature of tension clamp protects sleeper screw
- Abrasion plate (AP) reduces wear



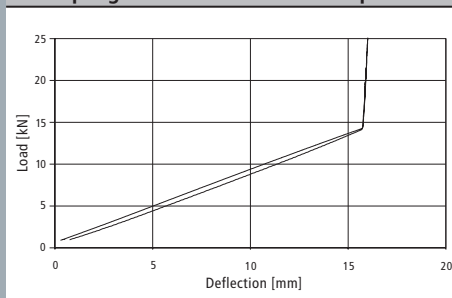
assembled

preassembled

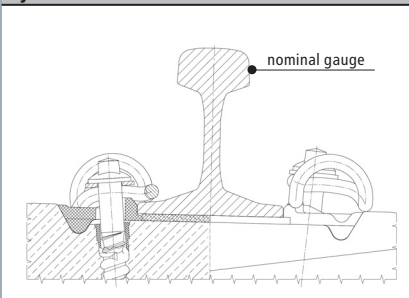
System W 30 HH AP



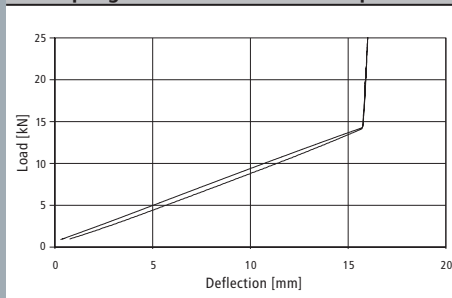
Load/spring deflection of tension clamp Skl 30



System W 30 HH



Load/spring deflection of tension clamp Skl 30



Vossloh Fastening Systems GmbH
P.O. Box 18 60
D-58778 Werdohl
Phone +49 (0) 23 92/52-0
Fax +49 (0) 23 92/52-375
info@vfs.vossloh.com