

Rail fastening system for concrete sleepers

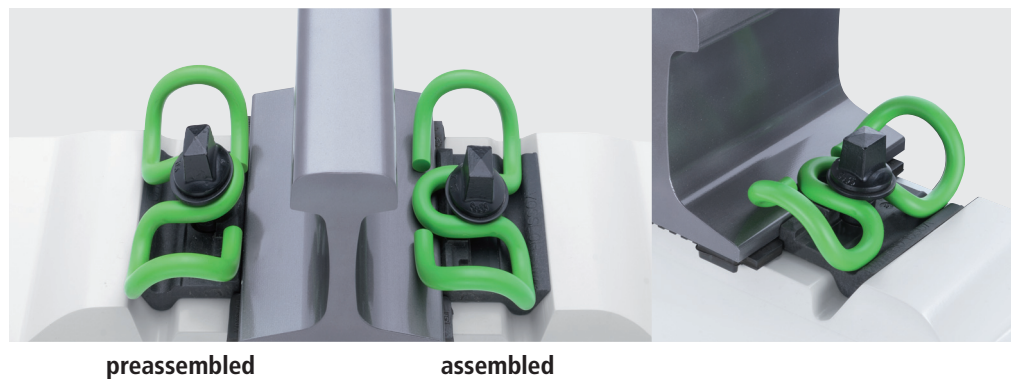
System W 30

System W 30 with tension clamp Skl 30

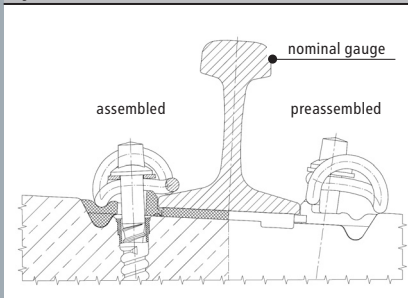
Highly elastic rail fastening system for ballast tracks and concrete sleepers.

FEATURES

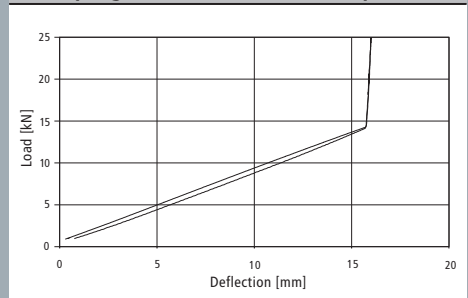
- Skl 30 tension clamp with high toe load combined with high fatigue strength of 2.2 mm
- For application in main lines with elastic rail pads
- All components can be pre-assembled at the switch or sleeper plant
- High toe load
- Rail tilting protection by middle bend of the tension clamp and specially designed angled guide plate
- Electrically insulated
- Gauge adjustment ± 5 mm by replacing of angled guide plates



System W 30



Load/spring deflection of tension clamp Skl 30



Vossloh Fastening Systems GmbH
P.O. Box 18 60
D-58778 Werdohl
Phone +49 (0) 23 92/52-0
Fax +49 (0) 23 92/52-375
info@vfs.vossloh.com