

Rail fastening system for slab tracks

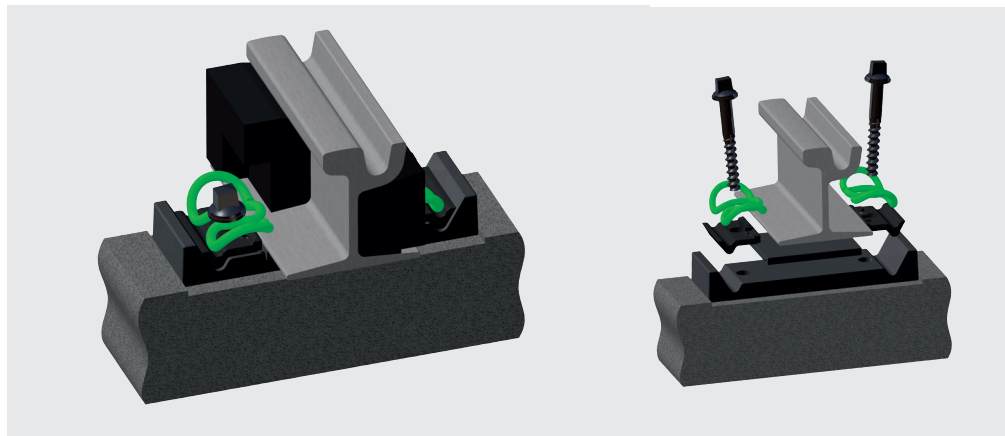
System W-Tram

System W-Tram with tension clamp Skl 21

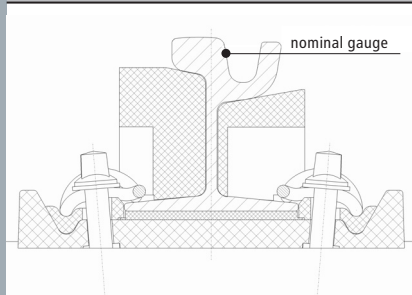
Highly elastic rail fastening system as single support point with a screw/dowel combination to be anchored in the substructure of light rail systems.

FEATURES

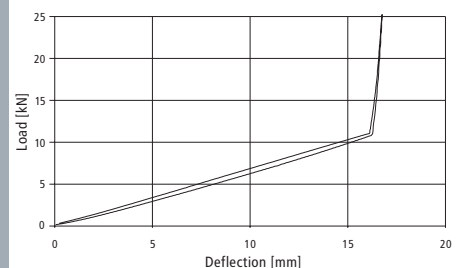
- Skl 21 tension clamp with 2.5 mm fatigue strength
- Gauge adjustment ± 10 mm with angled guide plates
- Simply installation
- Height adjustment possible
- Installation in turnouts possible
- Installation in covered tracks possible
- High elastic intermediate pads with stiffnesses ≥ 30 kN/mm allow a high vertical deflection of rail
- Rail tilting protection by middle bend of the tension clamp and specially designed angled guide plate
- High electric insulation



System W-Tram



Load/spring deflection of tension clamp Skl 21



Vossloh Fastening Systems GmbH
P.O. Box 18 60
D-58778 Werdohl
Phone +49 (0) 23 92/52-0
Fax +49 (0) 23 92/52-375
info@vfs.vossloh.com