

Rail fastening system for concrete sleepers

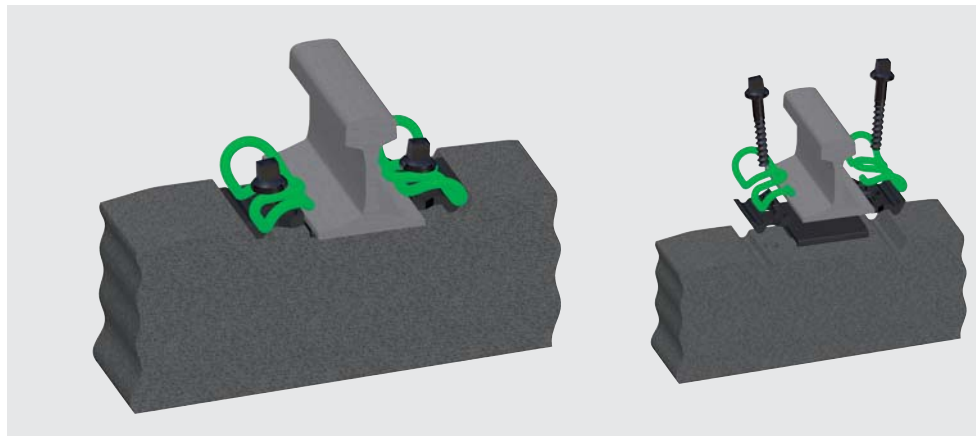
System W 28

System W 28 with tension clamp Skl 28

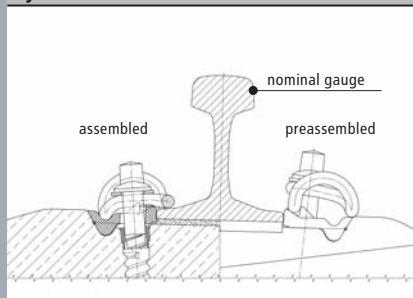
Highly elastic rail fastening system
for ballast tracks and concrete sleepers.

FEATURES

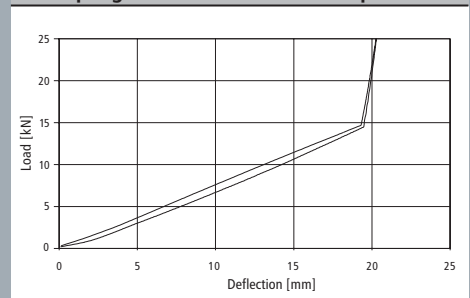
- Skl 28 tension clamp with high toe load of 14 kN combined with 2.5 mm fatigue strength
- Highly elastic intermediate pads with stiffnesses > 50 kN/mm permit ample rail subsidence
- Rail tilting protection by middle bend of the tension clamp
- Low supporting point and edge forces along curves thanks to elastic response



System W 28



Load/spring deflection of tension clamp Skl 28



Vossloh Fastening Systems GmbH
P.O. Box 18 60
D-58778 Werdohl
Phone +49 (0) 23 92/52-0
Fax +49 (0) 23 92/52-375
info@vfs.vossloh.com

08.10 D

www.vossloh-fastening-systems.de